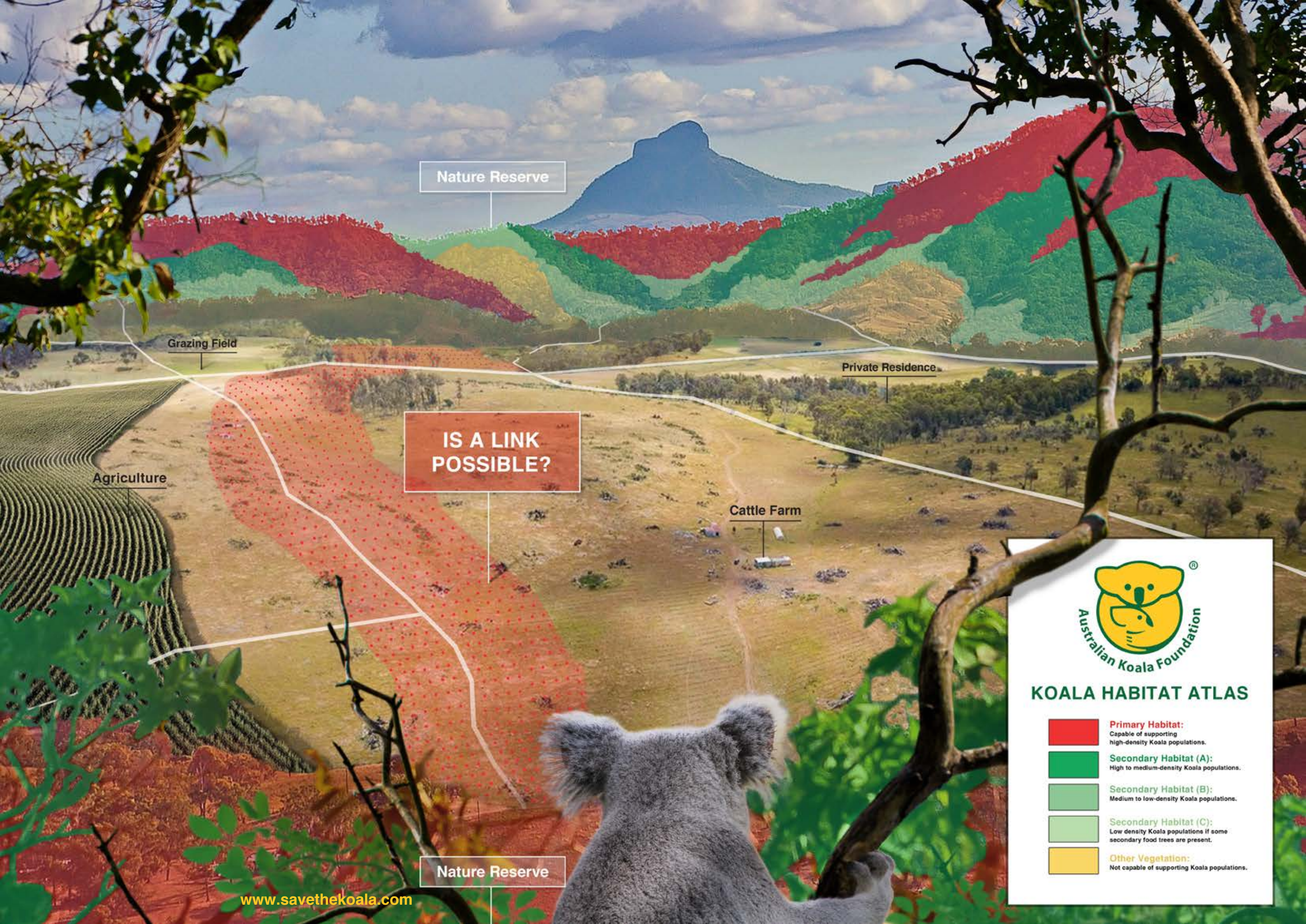


THE KOALA KISS PROJECT

A NEW VISION FOR THE KOALA





Nature Reserve

Grazing Field

Private Residence

IS A LINK
POSSIBLE?

Agriculture

Cattle Farm

Nature Reserve



KOALA HABITAT ATLAS

- Primary Habitat:**
Capable of supporting high-density Koala populations.
- Secondary Habitat (A):**
High to medium-density Koala populations.
- Secondary Habitat (B):**
Medium to low-density Koala populations.
- Secondary Habitat (C):**
Low density Koala populations if some secondary food trees are present.
- Other Vegetation:**
Not capable of supporting Koala populations.



Imagine if...

Koala habitat kiss points were fully mapped across the landscape.

&

Landholders had incentives to plant Koala forests that link fragmented habitats.

If we achieve **contiguous habitat** across the entire range of the Koala, then all creatures great and small could traverse through the bush unthreatened.

Imagine if...

We could walk an uninterrupted journey from south to north under the shade of beautiful gum trees, with Koalas sitting happily in the branches overhead.

With over 30 years of research behind the Koala Habitat Atlas, AKF's next grand vision could *redirect the fate of the Koala!*



A New Vision for the Koala

2018 marked the completion of an enormous undertaking; **The Koala Habitat Atlas (KHA)**, a first of its kind groundbreaking scientific achievement that maps the entire habitat range of a single species. The simple yet profound slogan that the Australian Koala Foundation (AKF) has followed for over 30 years—**No Tree, No Me**—sums up our philosophy perfectly; to protect a species, we must protect its habitat, and high-quality mapping is one of the most crucial parts of the puzzle.

KHA maps show that remaining habitat areas come close to 'kissing' each other in certain areas in the landscape. Large sections of intact Koala habitat run side by side, divided by strips of cleared land. These **'kiss points'** are key areas to identify for targeted future regeneration of the landscape and restoration of contiguous Koala habitat across the entire range of the Koala



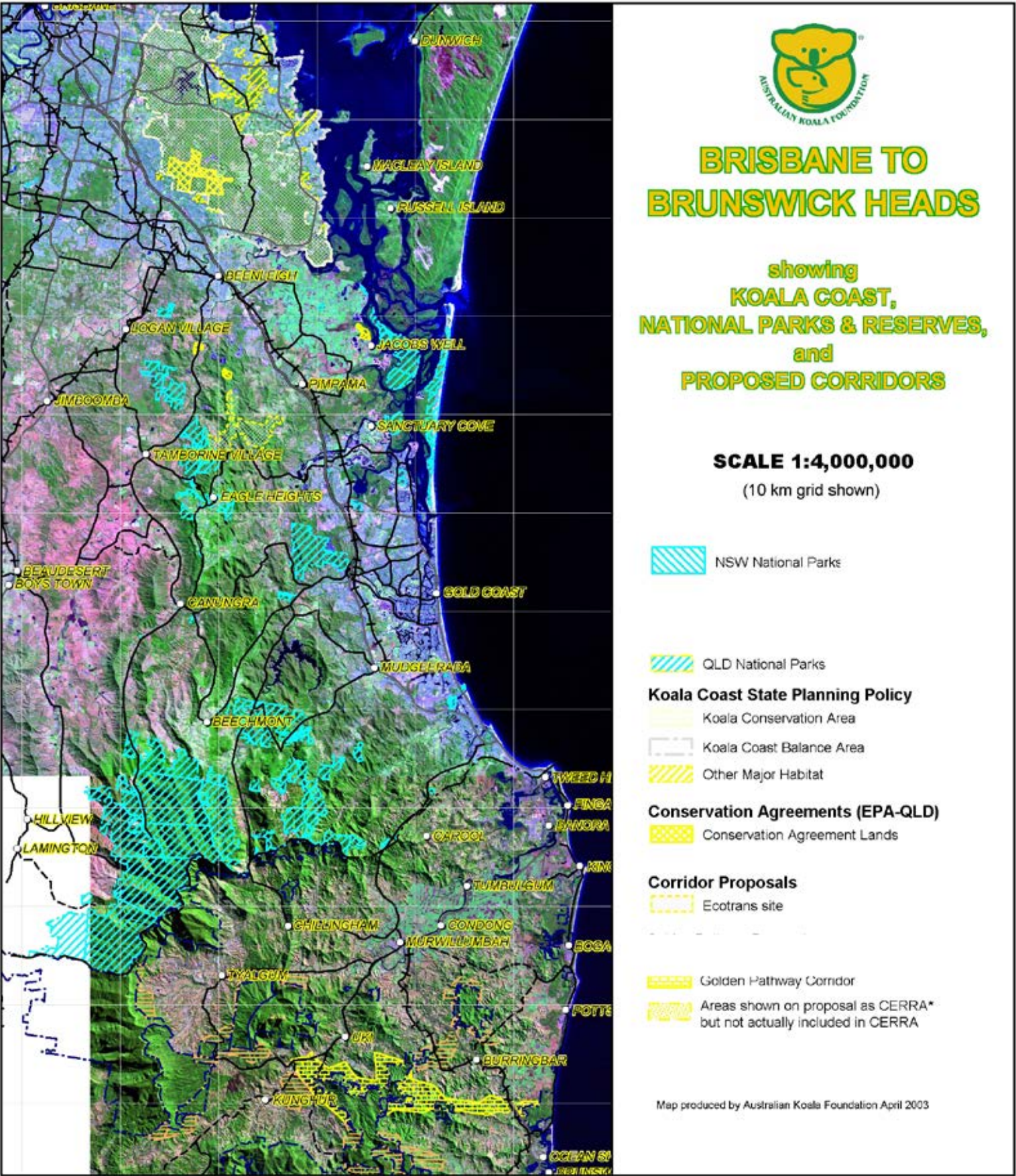
What is a 'Kiss Point'?

The point in the landscape where areas of Koala habitat comes close to each other, but remain separated by divisions of cleared land.



Early Exploration

Back in 2013 AKF first explored the science behind holistically linking fragmented Koala habitat.
This project was named ‘Golden Pathway Corridors.’ This map was a product of that research.



How to make this a reality?

The first phase on this project will be a scientific exercise using software to plot the kiss points over 1.5 million square kilometres of land. Once identified, landholders must be given incentives to plant koala forests that link fragmented habitats. Every kiss we can connect in the near future will help ensure the survival of the Koala.

AKF is all about recovery of the species and with the Federal Government now 7 years behind writing a recovery plan for the Koala – **a project like this is essential.**

