



Our National Parks Estate is dwarfed by the Mining Estate

The average Australian has no idea the impact mining is having on our country.

Outside the major urban centres, mining licenses and exploration permits cover vast tracts of the landscape. Much of this is Koala habitat.

Our National Park system currently manages 28 million hectares of land, nearly **4 per cent of Australia**. By comparison, gas and coal mines in QLD and NSW alone account for **2.7 per cent of Australia**.

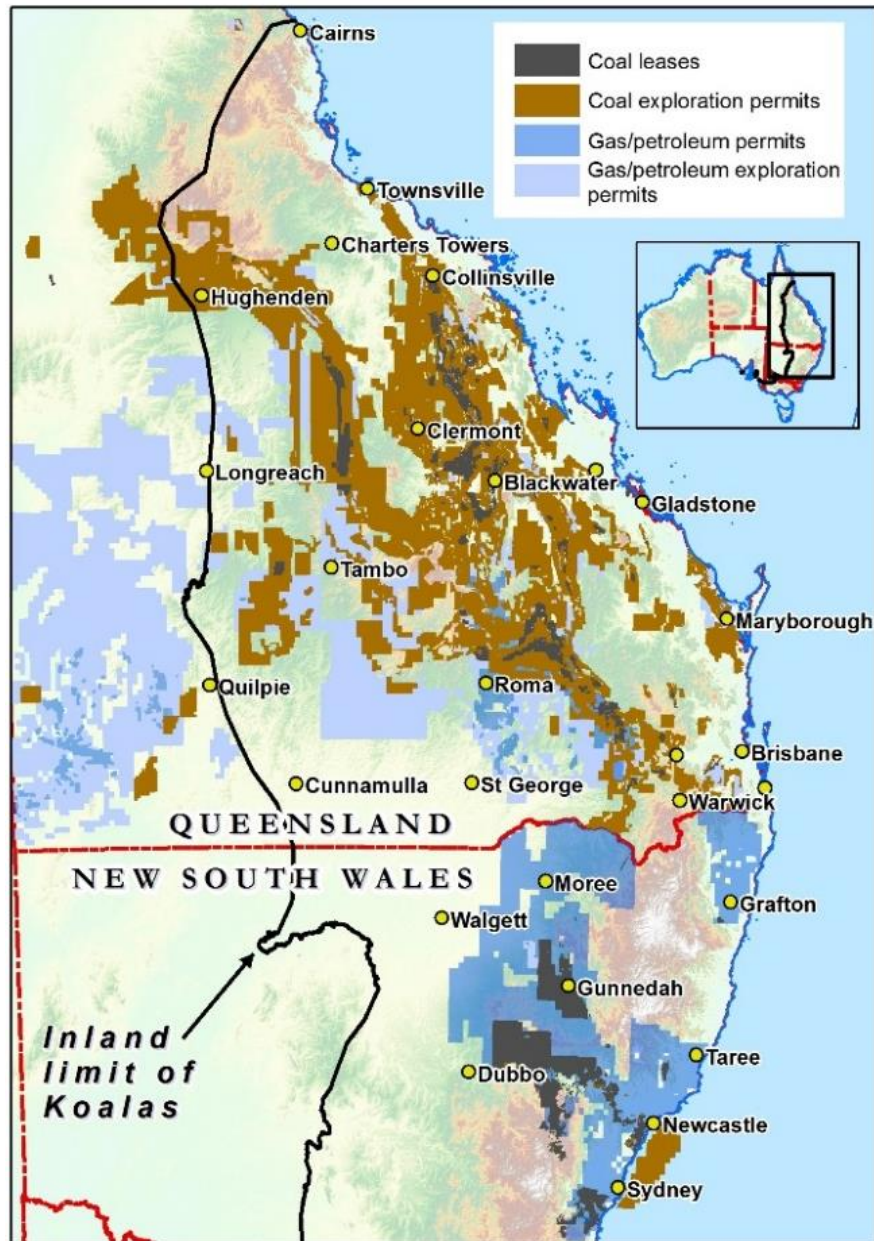


There are currently gas and coal exploration permits covering more than 39 per cent of Queensland and New South Wales –in Koala habitat. **That equates to 13 per cent of Australia.**

Despite a naïve perception that Koalas are safe in the bush, as you head west of the Great Dividing Range, mining is one of the most significant threats to the Koala’s survival.

With mining comes additional infrastructure: the roads and rail lines, storage facilities and tailings ponds. Not to mention CSG – a veritable spider’s web – developments everywhere - thrown like a blanket over the land.

There is little evidence of compliance or proper policing. And if a breach is detected, often the penalty is a slap on the wrist – particularly in comparison to the money the mine is making.



Koala Protection Act

The Koala Protection Act (KPA) will insist on independent consultants providing advice to Government, and make sure that community concerns are met.